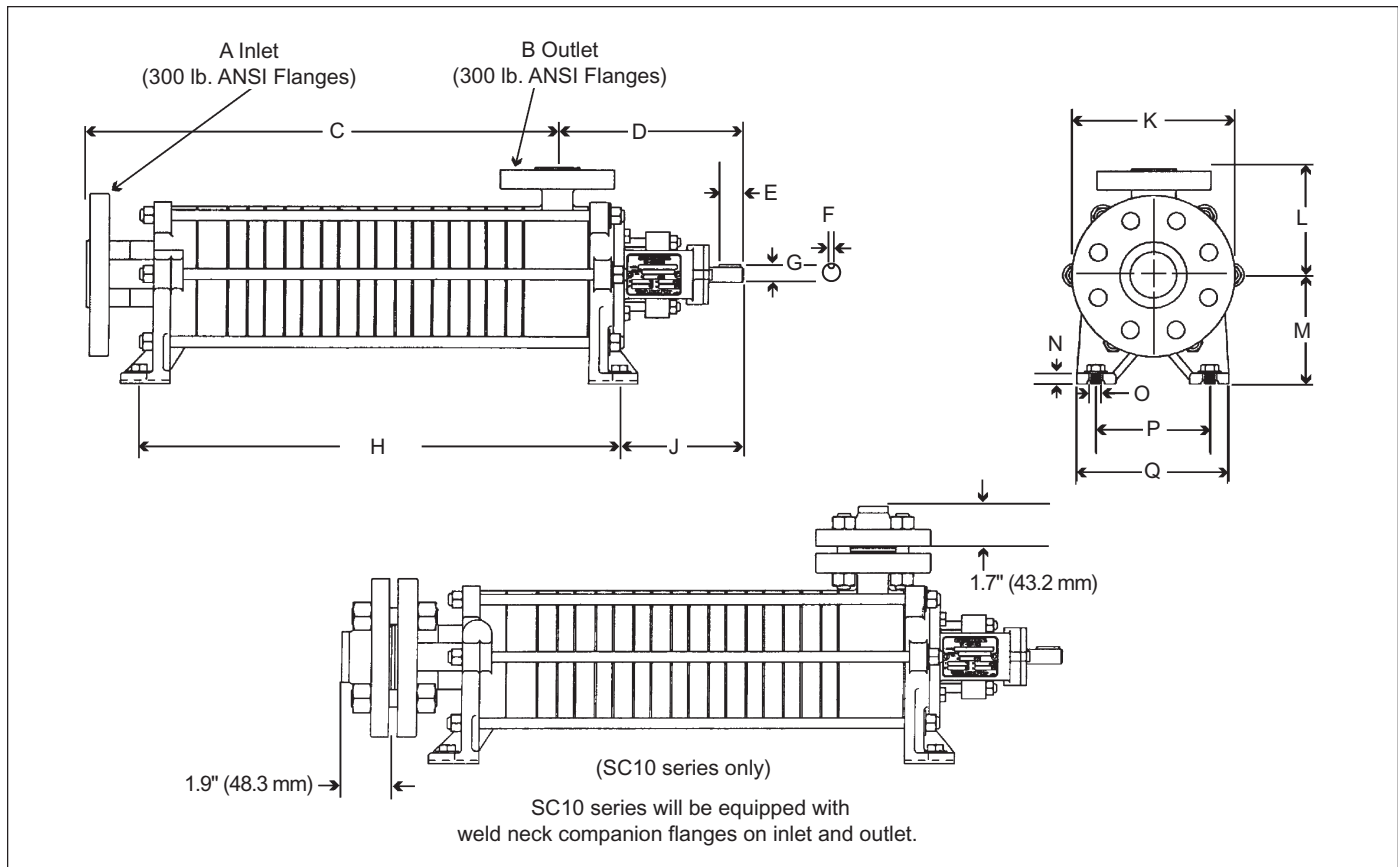


# Outline Dimensions for SC Pumps



Series	Inlet A*	Outlet B*	D	E	F	G	J	K	L	M	N	O	P	Q
SC10	1-1/2	3/4	6.73	**	**	**	4.45	5.91	3.94	3.94	0.39	0.51	4.13	5.51
	40	20	171	25	5	14	113	150	100	100	10	13	105	140
SC20 and 30	2-1/2	1-1/4	7.91	**	**	**	5.28	7.28	5.20	4.41	0.51	0.55	5.31	6.69
	65	32	210	40	6	19	134	185	132	112	13	14	135	170
SC40	3	1-1/2	7.68	**	**	**	5.59	7.87	5.51	5.20	0.59	0.59	6.10	7.68
	80	40	195	45	8	24	142	200	140	132	15	15	155	195
SC50	4	2	9.33	**	**	**	6.26	9.25	6.50	6.30	0.71	0.59	6.69	8.46
	100	50	237	50	10	28	159	235	165	160	18	15	170	215
SC60	4	2-1/2	10.31	**	**	**	6.77	9.25	7.09	7.09	0.79	0.59	7.68	9.65
	100	65	262	65	10	32	172	235	180	180	20	15	195	245

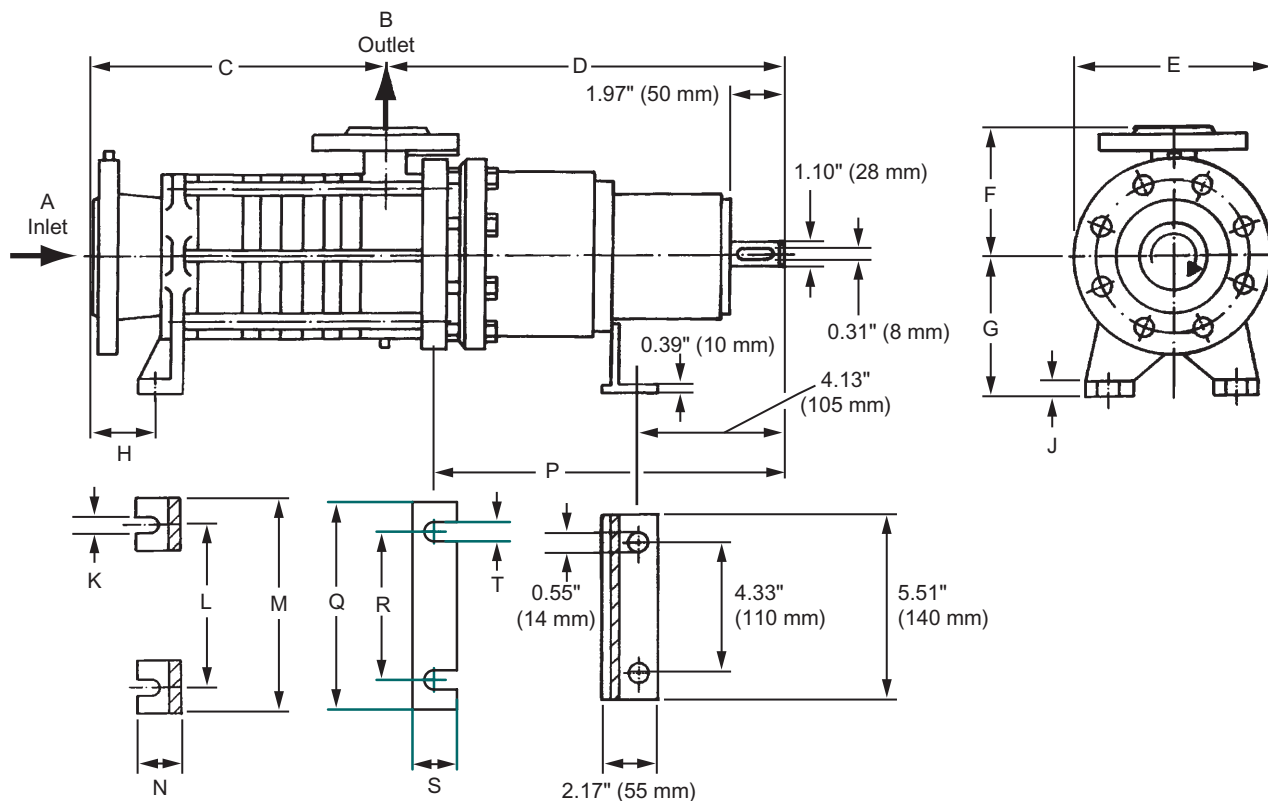
\*Inlet and outlet flanges are per DIN spec (PN40 DIN 2501). Flanges can be drilled per ANSI for 300 lb. flanges, except for SC10 series.

\*\*These dimensions are available in metric only. U.S. couplings must be machined before use.

Series	1 Stage		2 Stage		3 Stage		4 Stage		5 Stage		6 Stage		7 Stage		8 Stage	
	C	H	C	H	C	H	C	H	C	H	C	H	C	H	C	H
SC10	7.68	8.03	9.02	9.37	10.35	14.65	11.69	12.05	13.03	13.39	14.37	14.72	15.71	16.06	17.05	17.40
	195	204	229	238	263	372	297	306	331	340	365	374	399	408	433	442
SC20 and 30	8.39	8.94	9.96	10.51	11.54	12.09	13.11	13.66	14.69	15.24	16.26	16.81	17.83	18.39	19.41	19.96
	213	227	253	267	293	307	333	347	373	387	413	427	453	467	493	507
SC40	10.55	10.20	12.72	12.36	14.88	14.53	17.05	16.69	19.21	18.86	21.38	21.02	23.54	23.19	26.89	25.35
	268	259	323	314	378	369	433	424	488	479	543	534	598	589	653	644
SC50	12.01	12.32	14.96	15.28	17.91	18.23	20.87	21.18	23.82	24.13	26.77	27.09	29.72	30.04	32.68	32.99
	305	313	380	388	455	463	530	538	605	613	680	688	755	763	830	838
SC60	13.31	13.90	16.85	17.44	20.39	20.98	23.94	24.53	27.48	28.07	31.02	31.61	34.57	35.16	38.11	38.70
	338	353	428	443	518	533	608	623	698	713	788	803	878	893	968	983

Dimensions shown in grey area are millimeters while non-shaded areas are inches.

# Outline Dimensions for SCM Pumps



**NOTE:**

- 1) SCM10 series will be equipped with weld neck companion flanges on inlet and outlet.
- 2) For pumps containing four to eight stages, a middle foot is required. For dimensions see the chart on page 3.

Series	Inlet A <sup>1</sup>	Inlet B <sup>1</sup>	D <sup>2</sup>	E	F	G	H	J	K	L	M	N	P <sup>2</sup>
SCM10	1.5	0.75	14.33	5.91	3.94	3.94	1.93	0.39	0.51	4.13	5.51	1.73	11.54
SCM20 and 30	2.5	1.25	13.97 / 14.76	7.28	5.20	4.41	2.09	0.51	0.55	5.31	6.69	1.89	11.85 / 12.64
SCM40	3	1.5	14.09 / 15.16	7.87	5.51	5.20	2.48	0.59	0.59	6.10	7.68	2.17	11.10 / 12.17
SCM50	4	2	14.56 / 15.35	9.25	6.50	6.30	2.83	0.63	0.59	6.89	8.66	2.13	11.54 / 12.44

<sup>1</sup>Inlet and outlet flanges are per DIN spec (PN40 DIN 2501). Flanges can be drilled per ANSI for 300 lb flanges, except for SC10 series.  
<sup>2</sup>Depends on the magnetic coupling selected.

Series	C Number of stages							
	1	2	3	4	5	6	7	8
SCM10	7.68	9.02	10.35	11.69	13.03	14.37	15.71	17.05
	195	229	263	297	331	365	399	433
SCM20 & 30	8.39	9.96	11.54	13.11	14.69	16.26	17.83	19.41
	213	253	293	333	373	413	453	493
SCM40	10.55	12.72	14.88	17.05	19.21	21.38	23.54	25.71
	268	323	378	433	488	543	598	653
SCM50	12.01	14.96	17.91	20.87	23.82	26.77	29.72	32.68
	305	380	455	530	605	680	755	830

Dimensions shown in grey area are millimeters while non-shaded areas are inches.

## Outline Dimensions for SCM Pumps (continued)

Dimensions for Extra Foot on SCM Series Pumps (for stages 4-8 only)					
Pumps	SCM10	SCM20	SCM30	SCM40	SCM50
Coupling sizes Dimension	12,14,16	12,14,16 22,24,26	12,14,16 22,24,26	22,24,26 36,38	22,24,26 36,38
	6.69	7.87	7.87	7.87	7.87
Q	170	200	200	200	200
	5.51	6.69	6.69	6.69	6.69
R	140	170	170	170	170
	1.81	0.79	0.79	1.81	1.81
S	30	20	20	30	30
	0.51	0.51	0.51	0.59	0.59
T	13	13	13	15	15