

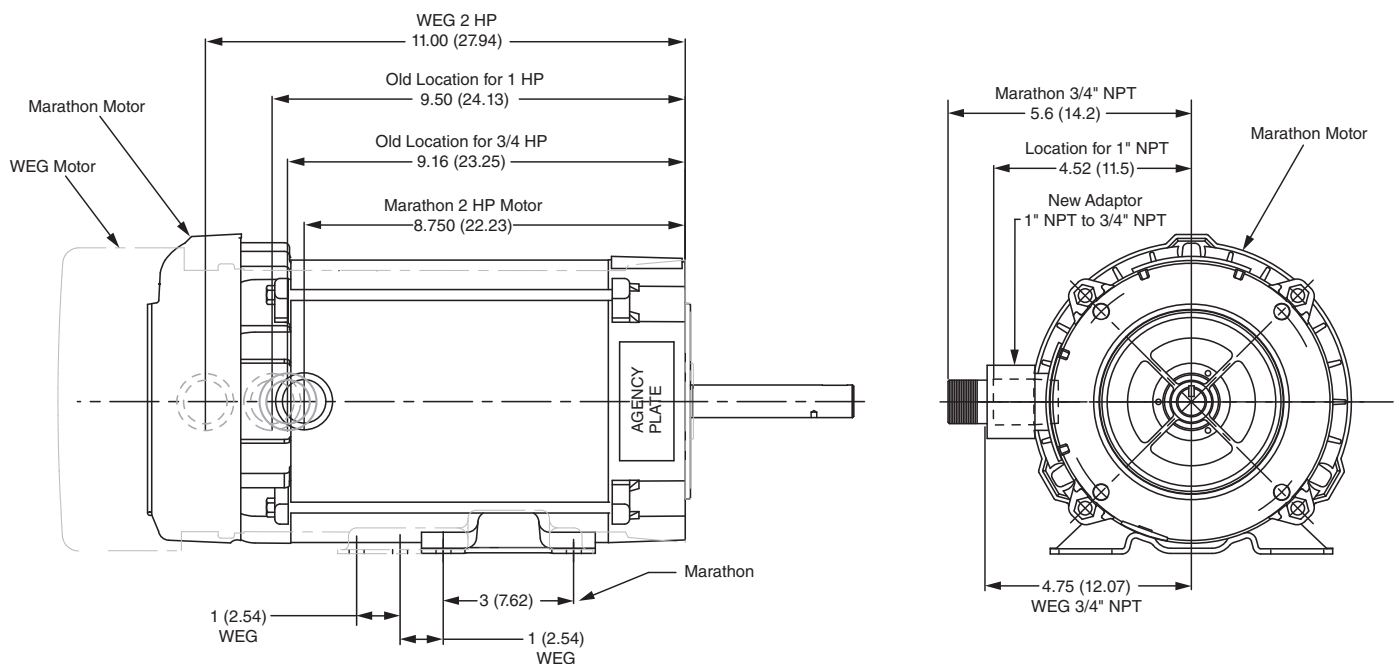
# Electric Motor Dual Supply

Sales Bulletin  
No. 280  
July 2020

As Corken navigates the COVID-19 crisis, we are working to ensure that we have backup sources of supply for certain critical parts to minimize the probability of supply disruption. As part of these efforts and to ensure reliable and consistent motor supply, we will be introducing WEG motors as a second motor source in addition to the Marathon motors currently supplied with our C-Series pumps.

Effective immediately, Coro-Flo regenerative turbine pump models C10, C12, and C13 may be provided with either a 2 HP Marathon motor or 2 HP WEG motor. We expect that these motors will perform no differently and will have the same high quality of manufacture you can expect from Corken.

However, the dimensions for the 2 HP WEG motor are slightly different than 2 HP Marathon motors. Therefore, the conduit location and footprint will change as illustrated below. If you are replacing one of the models mentioned above or installing a new one, please review the new dimensions carefully before mounting the 2 HP WEG motor or installing the electrical piping.

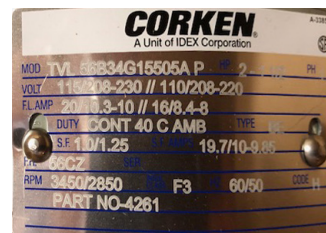


**Please Note:**

- THE S-30 AND SM-30 SWITCH ASSEMBLIES FOR THE 2 HP MOTOR DO NOT INCLUDE THERMAL OVERRIDE PROTECTION.
- YOU CAN IDENTIFY THE MOTOR BRAND SUPPLIED BY THE SERIAL PLATES ACCORDING TO THE IMAGES BELOW:



WEG Motor Serial Plate



Marathon Motor Serial Plate



CORKEN, INC. • A Unit of IDEX Corporation  
9201 North I-35 Service Road, Oklahoma City, OK. 73131 U.S.A.  
Phone (405) 946-5576 • FAX (405) 948-7343  
Visit our website at [www.corken.com](http://www.corken.com)  
E-mail us at [cocsalesdept@idexcorp.com](mailto:cocsalesdept@idexcorp.com)

