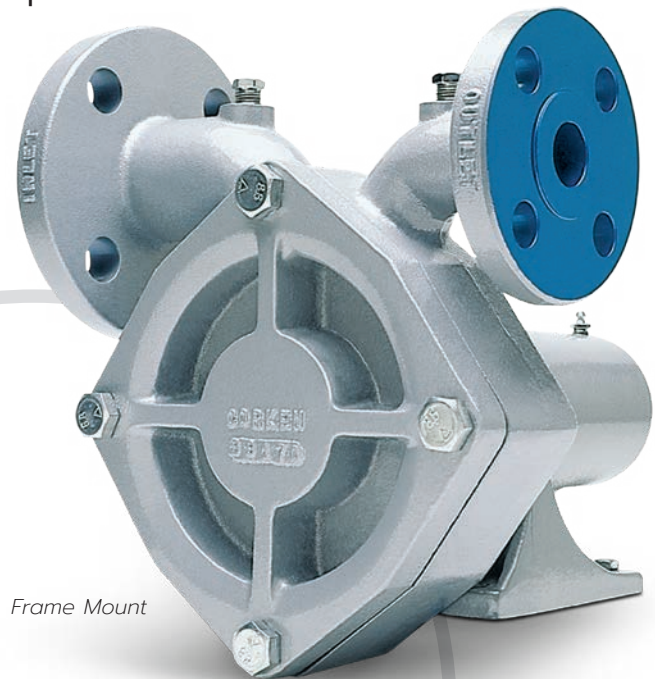


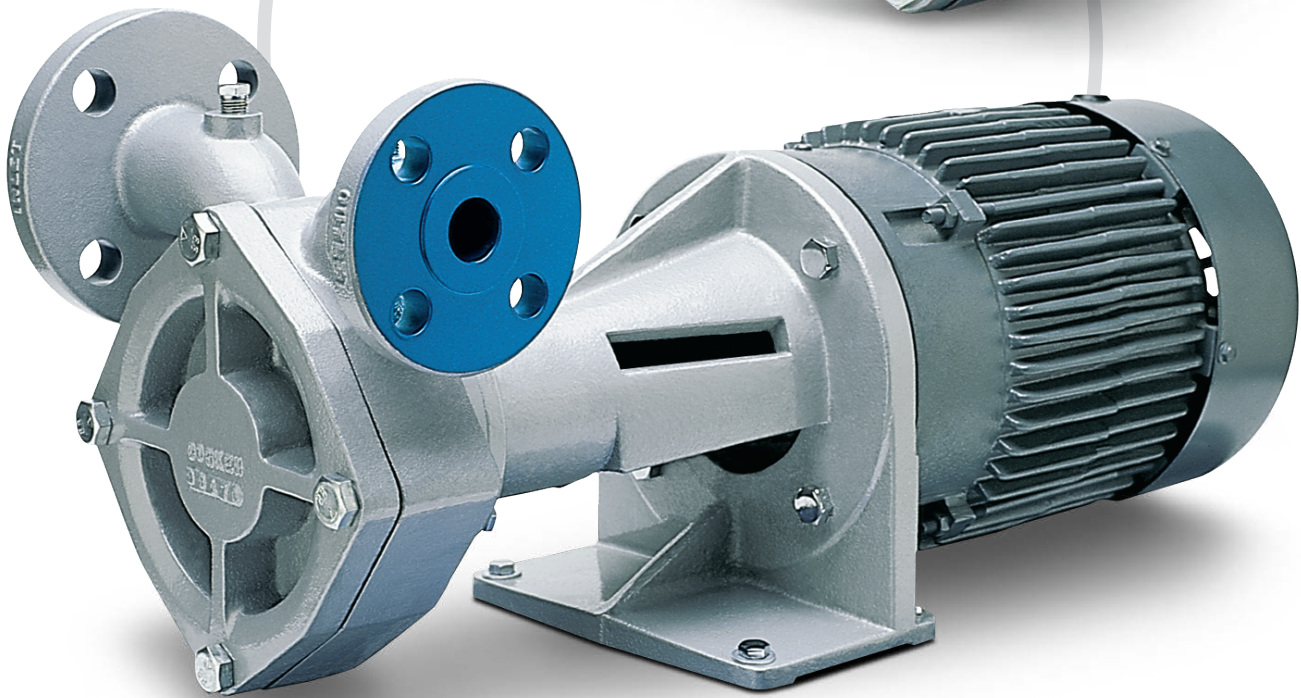
Autogas Series

Coro-Flo® Regenerative Turbine Pumps

For High Differential Pressure Applications
Using LPG and Many Other Liquefied Gases



Frame Mount



Direct Mount

CORKEN®

A Unit of IDEX Corporation

A Tradition of Excellence



Corken is a leading manufacturer of industrial compressors, pumps, bypass valves, and accessories designed for liquefied petroleum gas (LPG), anhydrous ammonia, and many other flammable, volatile, and toxic liquids and gases.

Located in Oklahoma City, Oklahoma, USA, Corken was founded in 1924 as a water and boiler feed pump distributor and quickly gained a reputation for excellence in customer service. In the mid-1940s, the company entered the LPG industry which proved to be a turning point. In the years to follow, Corken was recognized for its quality line of compressors, pumps, bypass valves, and accessories.

Many products meet multiple industry standards, including Underwriters Laboratories (UL), Canadian Standards Association (CSA), High Pressure Gas Safety

Institute of Japan (KHK), Bureau Veritas of France, European Union Pressure Equipment Directive (PED), ATEX Equipment Directive, European Union Machinery Directive, International Quality Standard (ISO 9001), and Environmental Management Standard (ISO 14001).

Today, Corken is a diversified company serving a worldwide customer base in Far East Asia, Africa, Europe, Middle East, South America, and North America. Each customer is served through an extensive network of distributors sharing the same commitment to customer service demonstrated by Corken for more than 90 years.

This exceptional reputation for customer service and quality products, combined with a strong commitment to technological innovation, has positioned Corken as a global leader in compression and pumping solutions.

CORKEN

Cost Effective Alternative to Submersible Designs

One to two dual hose dispenser applications...

Many autogas applications have underground tanks so higher differential pressures are required. Since some turbine pump designs are not suitable for the application, Corken designed two high differential pressure pumps to meet global demands for both above and below ground tank applications. The model 075 offers medium capacity for a single dispenser using one or two hoses while the model 150 is a high capacity design supporting two dual hose dispensers. Both are suitable for wide ranging dispensing requirements.

Continuous duty design...

The autogas series incorporates heavy duty bearings, free floating impeller, single mechanical seal, silicon carbide seal seat, Class 300 RF flange or DIN flange connections, metric fasteners, and a ductile iron case and head.

Multiple mounting options:

Frame mount offers two drive configurations

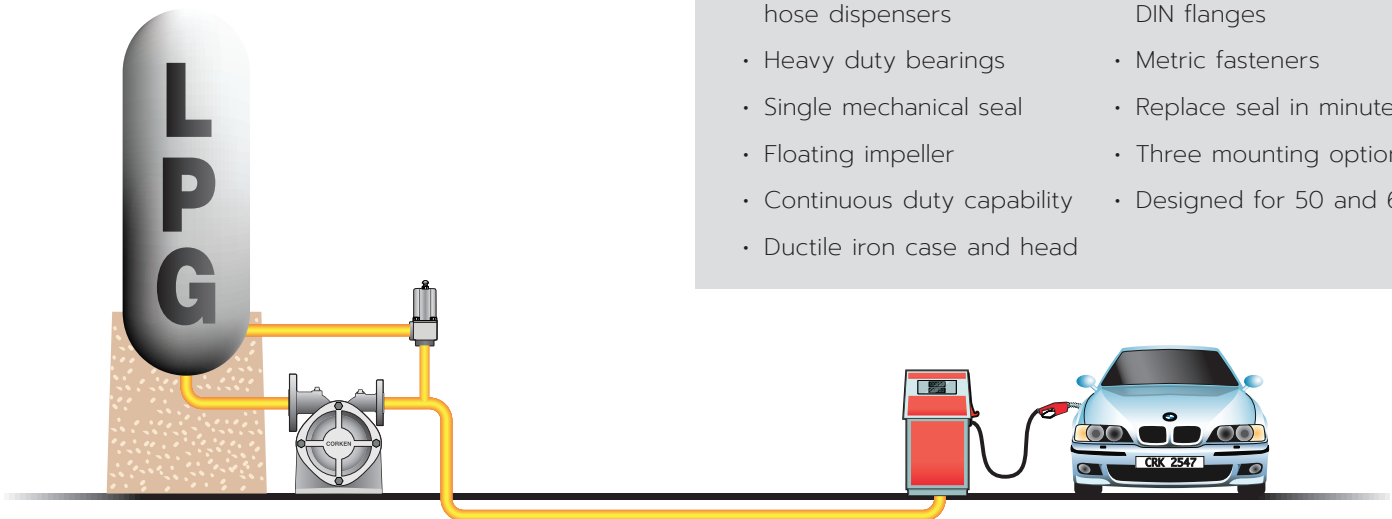
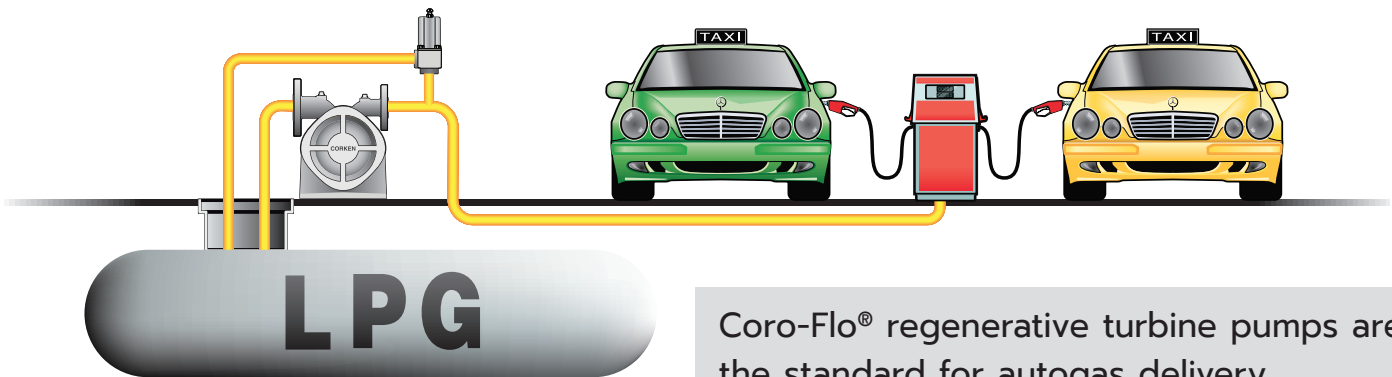
- Direct drive with coupling
- Belt drive

Direct mount

- Bolts directly to a standard C-Face 50 Hz (2880 RPM) or 60 Hz (3450 RPM) motor.

Serviceability is simple and cost effective...

The autogas series is a cost effective alternative to a submersible design. Unlike submersible pumps, autogas series pumps are mounted aboveground so there is no need to disturb the piping when performing routine maintenance. And, all parts are easily accessed by simply removing the pump cover minimizing costly downtime.



Coro-Flo® regenerative turbine pumps are the standard for autogas delivery.

- Suitable for single or dual hose dispensers
- Heavy duty bearings
- Single mechanical seal
- Floating impeller
- Continuous duty capability
- Ductile iron case and head
- Class 300 RF or DIN flanges
- Metric fasteners
- Replace seal in minutes
- Three mounting options
- Designed for 50 and 60 Hz

Regenerative Turbine Pumps Features and Benefits

High strength metric fasteners.

Case and cover are ASTM A536 ductile iron, providing maximum thermal shock protection.

Self-aligning, free-floating, precision machined impeller, incorporating proprietary design, optimizes flow and provides quiet non-pulsating transfer of LPG.

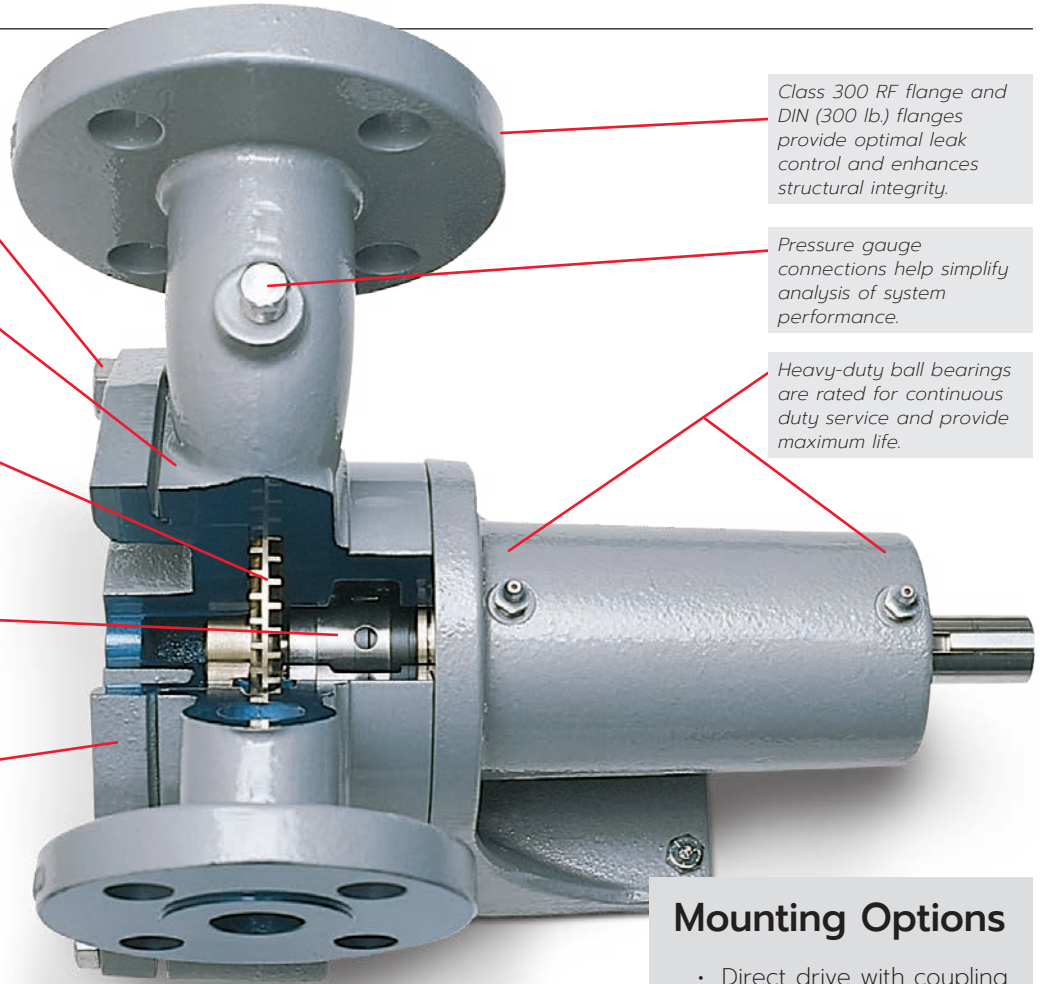
Single balanced, precision lapped, mechanical seal and silicon carbide seal seat provide an exceptional seal.

By simply removing the cover, the seal can be replaced in minutes.

Class 300 RF flange and DIN (300 lb.) flanges provide optimal leak control and enhances structural integrity.

Pressure gauge connections help simplify analysis of system performance.

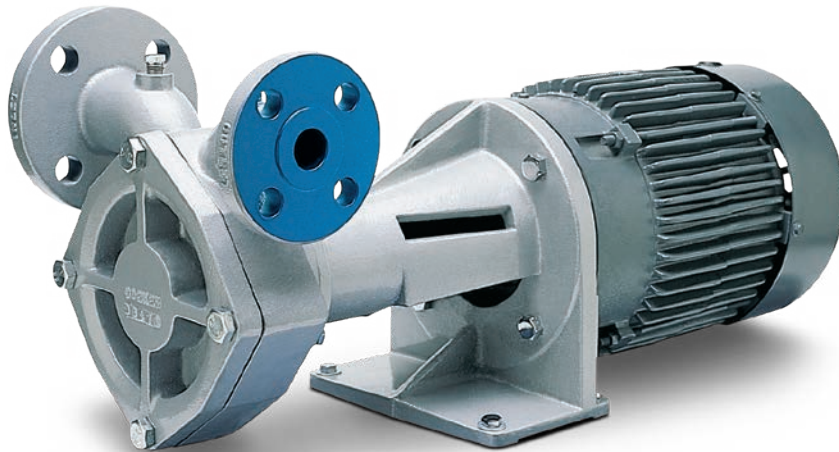
Heavy-duty ball bearings are rated for continuous duty service and provide maximum life.



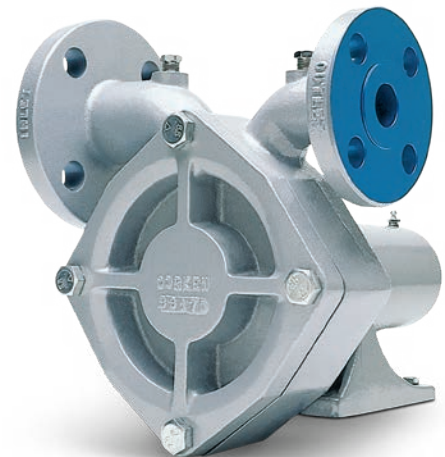
Model FF150 Pump

Mounting Options

- Direct drive with coupling
- Belt drive
- Direct mounted with C-face electric motor



Direct Mount



Frame Mount

High Differential Pressure Applications

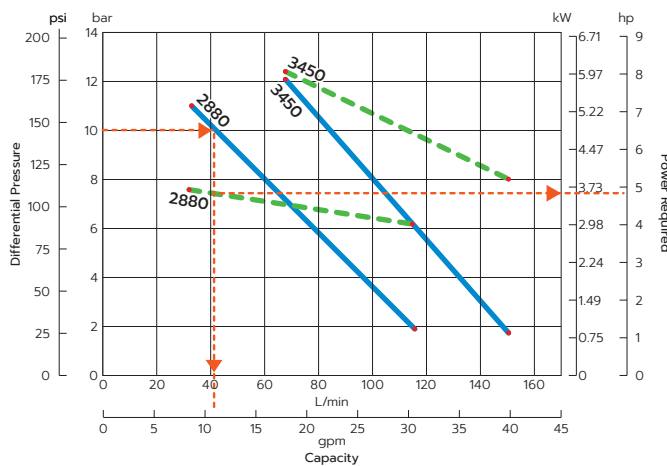
Specifications and Performance

Specifications	All Models 075 and 150
Inlet flange	1-1/2" - Class 300 RF flange or DIN 300 lb. (optional)
Outlet flange	1" - Class 300 RF flange or DIN 300 lb. (optional)
RPM	3450 at 60 Hz or 2880 at 50 Hz
Maximum working pressure	27.6 bar (400 psig)
Maximum differential pressure ¹	Model 075: 13.8 bar (200 psig) at 60 Hz Model 150: 17.2 bar (250 psig) at 60 Hz
Flow range	Model 075: 8.5–40 (32.2–151.4 L/min) Model 150: 11–60 (41.6–227.1 L/min)
Maximum/minimum temperature	107°C (225°F) / -32°C (-25°F)
Impeller material	Bronze (standard)
O-ring material	Buna-N (standard)
Seal seat material	Silicon carbide (standard)
Maximum driver	15 kW (20 hp)
Type of electric motor ²	Rigid-base (frame mount) and C-face (direct mount)

Other Applications

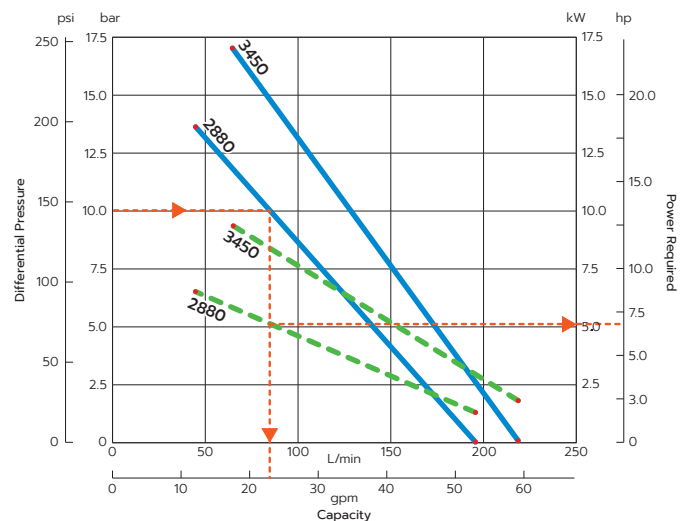
- Cylinder filling
- Vaporizer feed
- Bulk transfer
- Direct burner feed
- Aerosol propellant

Model 075 Coro-Flo® Pump³



2880 RPM @ 50 Hz		
Differential pressure:	Flow:	Power required:
10.0 bar	42 L/min	3.65 kW
145.0 psi	11 gpm	4.9 hp
Curves based on LPG³		
Capacity	Power required	

Model 150 Coro-Flo® Pump³



2880 RPM @ 50 Hz		
Differential pressure:	Flow:	Power required:
10.0 bar	85 L/min	5.1 kW
145.0 psi	22.5 gpm	6.8 hp
Curves based on LPG³		
Capacity	Power required	

¹ Maximum discharge pressure should be limited to the maximum system pressure rating.

² Consult factory regarding other types of motors.

³ The performance curves are based on above-ground LPG installations. Performance curves for underground LPG tanks will vary based on the specific installation. Consult factory.

Underground Tank Applications



Underground autogas installation using one autogas series pump with one tank.

Aboveground Tank Applications



Aboveground autogas installation using one autogas series pump with two tanks.



Aboveground autogas installation using one autogas series pump with three tanks.

Solutions beyond products...

CORKEN[®]

CORKEN, INC. • A Unit of IDEX Corporation
9201 North I-35 Service Road, Oklahoma City, OK. 73131 U.S.A.
Phone (405) 946-5576 • FAX (405) 948-7343

Visit our website at <https://www.corken.com> • E-mail us at cocsalesdept@idexcorp.com



@CorkenInc

