

Custom Compression Solutions

For Small HP Reciprocating Compressors

A Global Leader in Small HP Compression

Corken has been manufacturing compression solutions for the LPG and process gas markets for nearly 70 years. We offer a full line of small horsepower (7.5 to 75 hp) reciprocating compressors in vertical and horizontal designs. To help minimize fugitive emissions from toxic and flammable gases, each compressor is available in a double or triple packed configuration.

Off-The-Shelf Compression Solutions

Corken offers three standard (off-the-shelf) mounting configurations (103, 107 and 109 mountings) for all of its reciprocating compressors. A 103 mounting consists of a compressor, baseplate or skid, flywheel, belt and belt guard, adjustable driver slide base, and an optional driver. A 107 has all of the 103 items plus a liquid trap, four-way valve, and interconnecting piping. The 109 mounting has all of the 103 items plus a liquid trap, interconnecting piping but no four-way valve.

Custom Engineered Compression Solutions

When you are working with toxic and flammable gases, often times there are no off-the-shelf gas handling solutions. If one of our standard (off-the-shelf) mountings does not meet the requirements of your application, we will custom engineer a compressor package for you. Most of our custom compressor packages are a modification of our standard mountings. If the requirements of your application do not fit within one of our custom packages or skids, we can start from scratch and build a compressor package or skid from the floor up. We now offer an ASME B31.3 - 2012 piping option for all of our compressor packages.



Send us your specifications and one of our application engineers will design a custom engineered package to meet your needs.

Operating Specifications:

- Horsepower/(kW): 7.5 to 75 (5.6 to 55.9)
- Working Pressure: Up to 1,650 psi (113.8 bar g)
- Single- and Two-stage Models
- Air and Water Cooled Models
- Sweet Gas Only

Applications:

- Gas Boosting
- Gas Gathering
- Landfill Gas Recovery
- Liquid Transfer
- Tank Car Unloading
- Vapor Recovery
- And many more...

Industries Served:

Process

Chemical & Petrochemical Processing

Energy

Oil & Natural Gas Production
Alternative Fuels
Refined Petroleum Products
Liquefied Gases
Electric Power Generation

Transport

Liquid & Liquefied Gas Terminals



Now Available

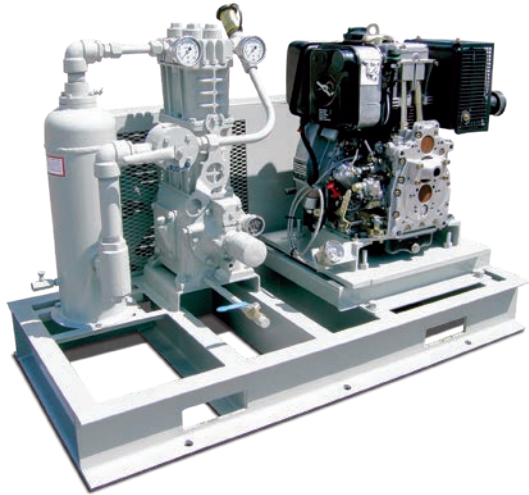
See corken.com for more information

Benefits of Using Our Compression Solutions:

- Single Source Supplier
- Custom Control Options
- Proven Technology
- ASME B31.3 Piping Option
- Factory Built and Tested
- On-site Start Up and Training Available
- Nearly 70 Years of Expertise

Solutions beyond products...

CORKEN
IDEX®



291-107 Compressor Package Unit

Model 291 single-stage compressor packaged with a gas engine drive. The 107 mounting includes a baseplate, belt and belt guard, flywheel, 40 mesh strainer, non-lube four-way valve, interconnecting piping, and a mechanical liquid trap. This is a mobile package designed for tank maintenance evacuation and emergency evacuation situations such as an over turned tank car or transport truck.



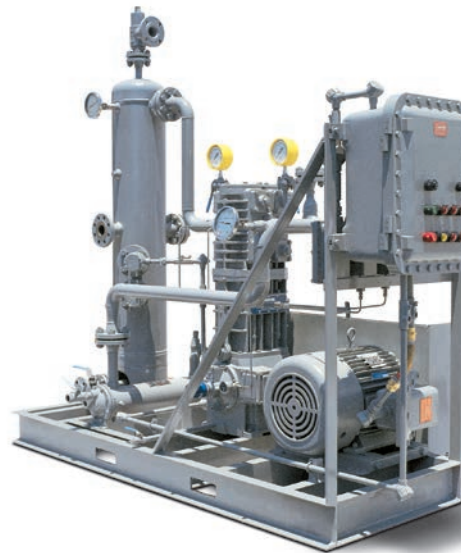
691-107B Compressor Package Unit

Model 691 single-stage LPG compressor packaged with an electric motor drive. The 107B mounting includes a baseplate, belt and belt guard, flywheel, 40 micron strainer, non-lube four-way valve, interconnecting piping, and an automatic liquid trap with NEMA 7 liquid level switches. This package is designed for liquefied flammable and toxic gas transfer and vapor recovery applications.



FT491-109F Compressor Package Unit

Model FT491 single-stage, flanged compressor packaged with an electric motor drive. The FT491 is a T-Style design with three sets of packing that minimizes fugitive emissions from toxic gases. The 109F mounting includes a baseplate, belt and belt guard, flywheel, interconnecting piping, automatic liquid trap with 300# ANSI flanges, and two NEMA 7 liquid level switches. This package is designed for liquefied gas transfer applications using vinyl chloride, butadiene and methyl chloride.



D891-109F Compressor Package Unit

Model D891 single-stage compressor packaged with an electric motor drive. The 109F mounting includes a baseplate, belt and belt guard, flywheel, interconnecting piping, automatic liquid trap with 300# ANSI flanges, and two NEMA 7 liquid level switches. This package is designed for vapor recovery applications.

Solutions beyond products...

CORKEN
IDEX®

Corken, Inc. • A Unit of IDEX Corporation
9201 North I-35 Service Road, Oklahoma City, OK. 73131 U.S.A.
Phone (405) 946-5576 • FAX (405) 948-7343
Visit our website at <http://www.corken.com>