
IMPORTANT INSTRUCTIONS

FOR ALL MODELS 590 & 691

CORKEN is now using a new improved valve and unloader design in the 590 through 691 series compressors effective with Serial Number MR50653. The new valve and unloaders will fit in any existing compressor in this model range regardless of age.

Here are some of the features and benefits of the new assemblies:

- ALL STAINLESS STEEL CONSTRUCTION
 - Corrosion Resistant
 - Longer Wearing
- IMPROVED SPEC. 3 DESIGN
 - No Adjustment Required
- PISTON TYPE UNLOADER
 - Compatible With Most Gases
 - No Diaphragms To Fail
- NO INCREASE IN PRICE OVER THE PREVIOUS VERSIONS

To facilitate the conversion of machines already in service, we have developed a number of specially priced kits as described on the following pages.

CORKEN[®]
IDEX

**Before ordering conversion parts,
be sure to have the Model & Serial No. of the existing unit.**

VALVE CONVERSION KITS

MODELS PRIOR TO SN MR50653	VALVE SPEC	SUCTION VALVE PART No. QTY (c)	DISCHARGE VALVE PART No. QTY (c)	O-Rings (a)	QTY
590, A590, D590, W590, WA590, WD590	4	3144-X 3	3145-X 3	2-151_	4
	7,8,9	3144-X 1 3129-X 2	3145-X 3	2-235_	2
691, A691, D691, D691-4, D691, W690, WA690, WD690, WD690-4	3	3143-X 2	3145-X 2	2-031_	4 (b)
	4	3144-X 2	3145-X 2		
	7,8,9	3129-X 2	3145-X 2		

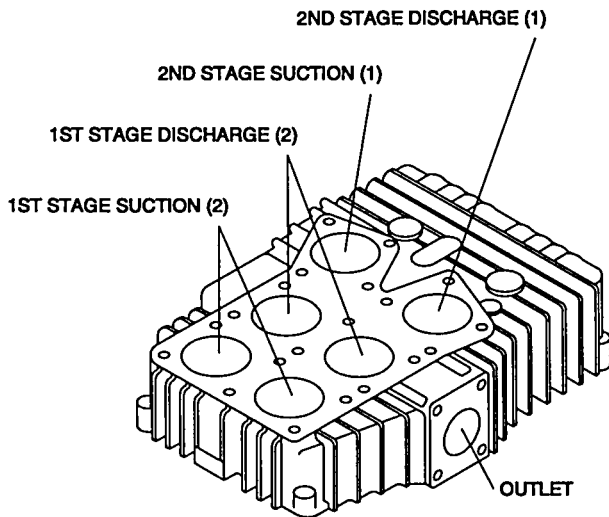
a) O-Rings should always be replaced when changing valves. All O-Ring part numbers require a suffix letter to indicate the material (ie. 2-235A). A = Buna-N (std), C = Neoprene, D = Viton, E = Teflon

b) Units prior to SN FS43290 used a Valve Cap with a flat metal gasket (2716). Units SN FS43290 & later use a Valve Cap with an O-Ring (2-031_).

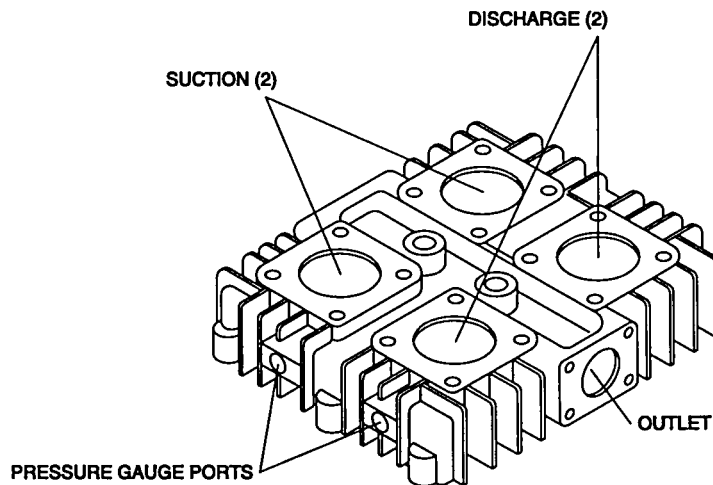
c) Part numbers for kits, valves, & metal gaskets include standard Aluminum gaskets. For copper gaskets, add a "1" to the number (ie. 3144-X1), and for iron/lead gaskets add a "2".

d) 590 Series Second Stage, and all 690 Series use the 2-235_ O-Ring under the Cover Plate. 590 Series First Stage use a 2-151_ size O-Ring.

Buna-N, Neoprene, Viton, and Teflon are trademarks of E.I. DuPont DeNemours Inc.

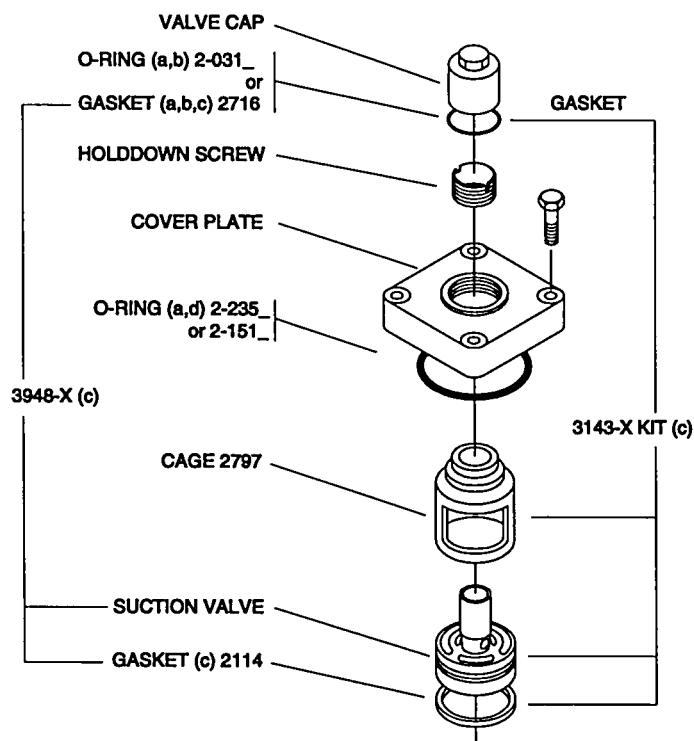


590 HEAD

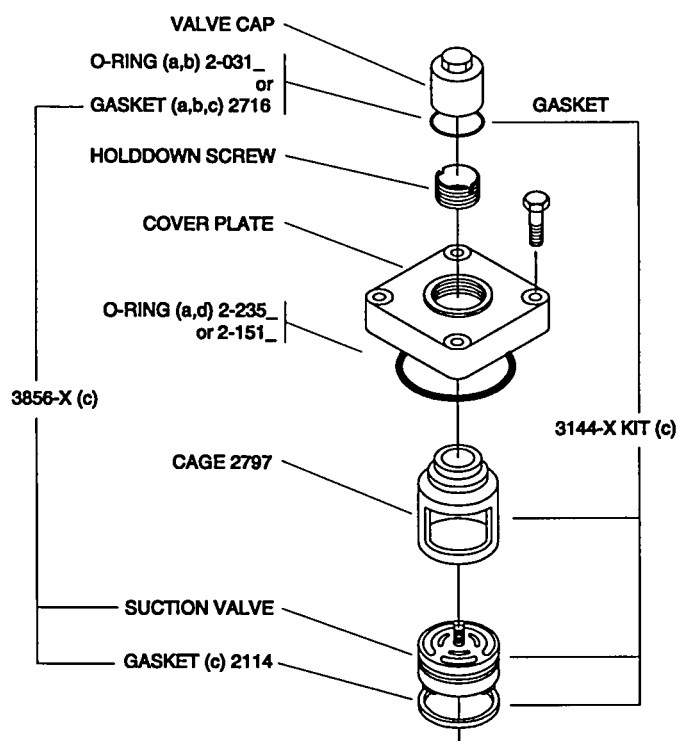


691 HEAD

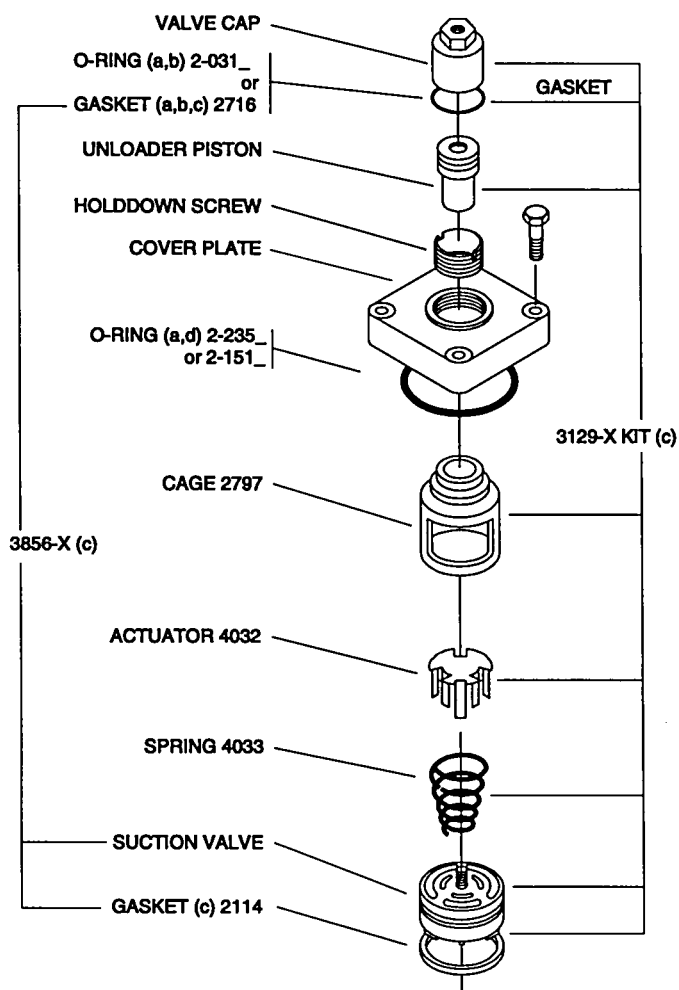
SUCTION VALVE SPEC. 3.



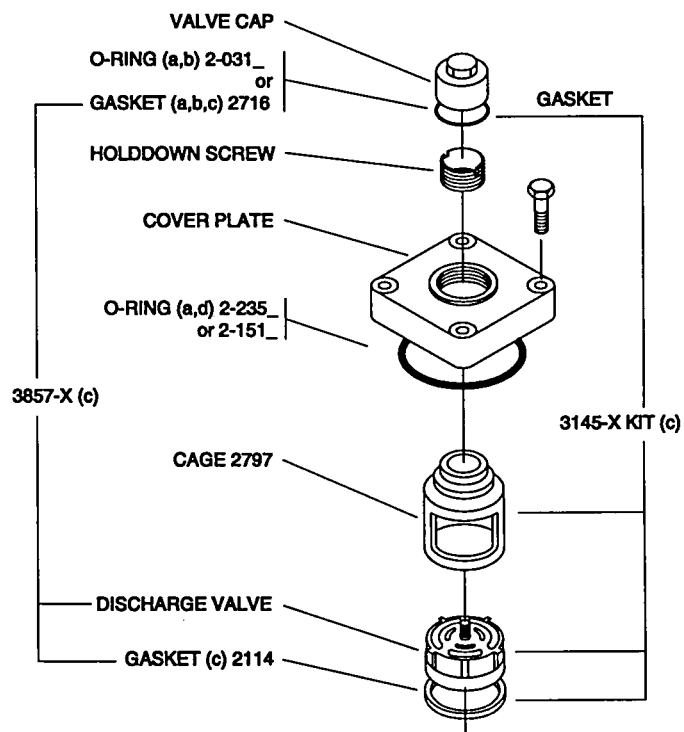
SUCTION VALVE SPEC. 4.



SUCTION VALVE SPEC. 7,78,8,9.



DISCHARGE VALVE ALL SPEC.



CORKEN®
IDEX

P .O. Box 12338, Oklahoma City, OK 73157
3805 N.W. 36th St., Oklahoma City, OK 73112
Phone (405) 946-5576 • Fax (405) 948-7343